

ATMOSPHERES



Gravity LED Light Bulb w/ Wireless Charging Manual

INTRODUCTION

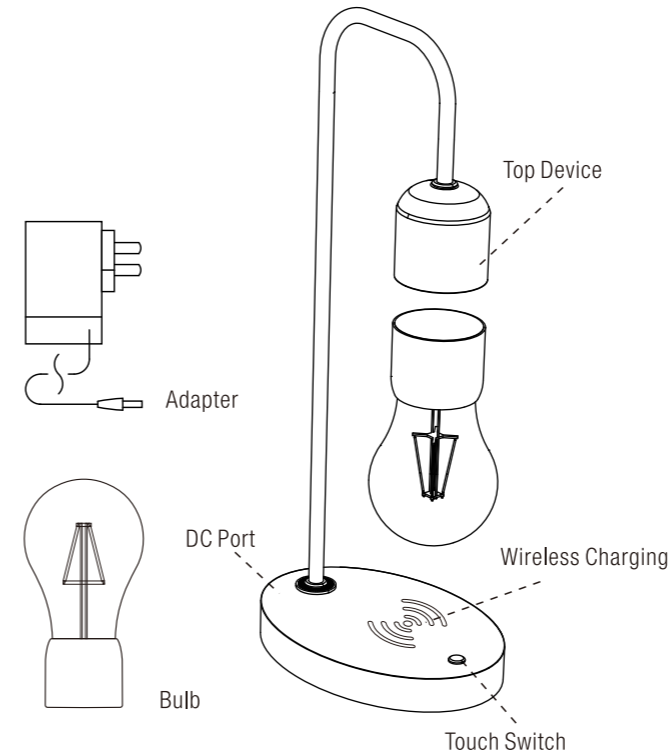
Looking to add a beautiful, art deco touch to your desk, bedroom, office, or living room? Then nothing beats the “cool factor” of the tzumi Gravity Bulb! Utilizing magnetic induction, this innovative desk lamp produces a soft, warm glow that hovers gracefully under a sleek chrome and wooden base that can also charge all Qi compatible devices. Enchantingly functional, our floating lamp features an old-school, Edison-style bulb that truly enhances your personal space. Offering 50,000 hours of rated efficiency and an easy-to-setup design this levitating LED light is sure to attract attention wherever it is located.

- Soft, warm light which is easy on the eyes; quiet and noiseless
- Wood-finish/ABS Base charges all Qi compatible devices
- One touch ON/OFF
- Energy conscious LED bulb lamp
- Elegant design that adds warmth to your home or office
- Indoor use only

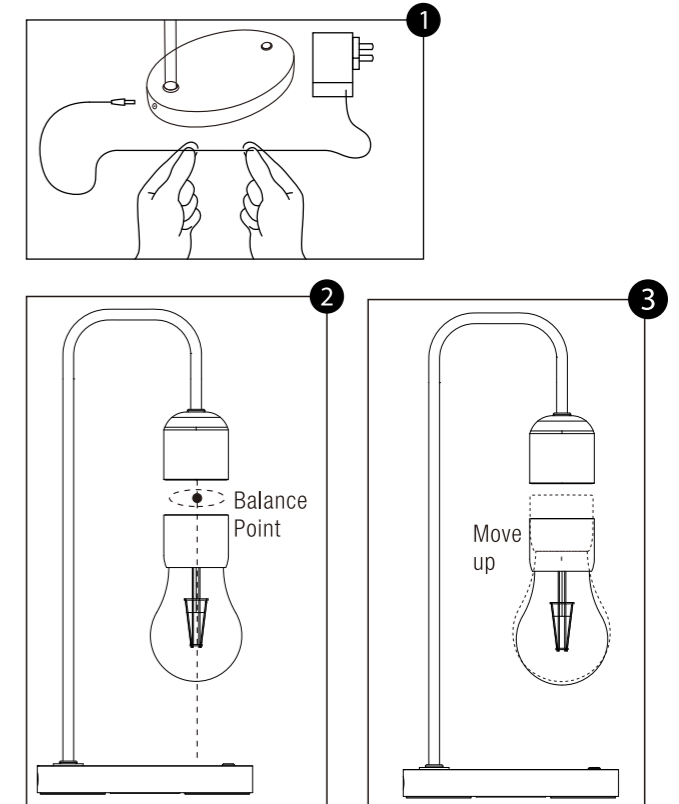
WHAT'S IN THE BOX?

- 1 – LED Light Bulb
- 1 – Wood/ABS & Metal Charging Base
- 1 – Power Adapter
- 1 – User Manual

DIAGRAM



USING THE GRAVITY BULB



USING THE GRAVITY BULB

1. Place the base on a flat surface; connect the power adapter to the DC port of the base then plug the adapter to an open outlet (100-240VAC).
2. The bulb will be levitated by a finding a balance between polar magnetic forces. When attempting to place and/or position the bulb, it is key to find the “balance point” between those magnetic forces. Typically, the balance point is located 2 cm below the top of the lamp itself.
3. Hold the bulb underneath the top of the lamp. Make sure the bulb is at least 3 in. away from and/or underneath the top of the lamp then move the bulb towards the top. You will know when you have approximately reached this point because the bulb will feel a magnetic tug and the bulb will almost feel balanced in mid-air (i.e. not falling down nor being pulled upwards).
4. Once you feel that you have indeed found the “balance point” you can let go of the bulb.
5. If the bulb floats in place...congrats, you did it! If the bulb falls...be sure to break the bulb's fall then simply try again until the proper “balance point” is found.
6. To use the fast wireless charging feature, simply put a compatible wireless charging device on the charging pad and it will automatically begin to charge, once fully charged the wireless charging will turn off.

FAQ'S

How does the bulb levitate?

Through a simple, yet intriguing, technology the levitation that occurs here is a result of the interaction of polar electromagnetic forces between the base and the bulb itself.

How does the bulb light up?

The Gravity Bulb is powered through wireless induction technology.

What happens if the lamp suddenly loses power?

The bulb uses a two-way drive, auto control system (i.e., the bulb will be automatically pulled upward to the base once the power is off).

Why is the base of the lamp warm?

It is normal for any/all electronics to heat up after extended use. The Gravity Bulb uses low voltage, has been rigorously tested, and it is safe.

SPECS

Input	12V/2A
Wireless Output:	10W
Charging Speed/Rate	2W
Bulb Wattage	1W
Item Weight	1.27 lbs. (580g)

IMPORTANT SAFEGUARDS

- The electromagnetic field sensor inside your Gravity Bulb is designed to automatically power down the lamp under certain circumstances (i.e. overheating). This is done to prevent damage to the circuitry and ensure a long product life.
- Remove all metallic items (rings, watches, etc.) from your hands before using the Gravity Bulb.
- The Gravity Bulb is intended for indoor use only and is best used where the ambient temperature is between 22°F - 95°F. (-5°C – 35°C).
- Do not use the Gravity Bulb near water or in wet surroundings.
- The base of the lamp should only be placed on a horizontal/flat surface and avoid surfaces affected by magnets including iron, metals, or other magnetic items as they can interfere with the operation of the lamp.
- Do not use a third party/aftermarket AC adapter. Please use the one provided.
- If the lamp comes in contact with any liquids, turn it off immediately.
- The lamp base may become warm during use. This is normal when it is operational.
- After extended periods of usage, let the base cool down for approximately 5 minutes before touching/moving it.
- Do not put objects that can be affected by strong magnetic fields near the Gravity Bulb such as: metallic items, credit cards, hard disk drives, or pacemakers.

If you have any other questions or issues with product use and/or care, please contact tzumi Technical Support at: support@tzumi.com or 1-855-GO-TZUMI.



tzumi™ Inc. Distributed by tzumi Inc. NY, NY 10016. © Copyright 2021 tzumi Inc. All Rights Reserved. Made in China. Other trademarks and trade names are those of their respective owners. Subject to change without prior notice.