

Soundmates PRO ANC



tzumi



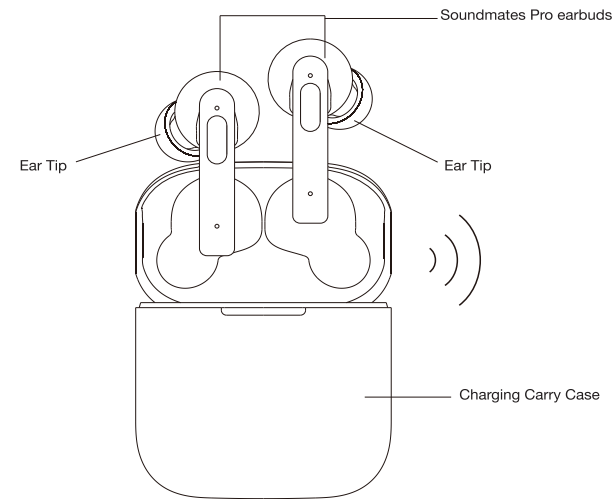
Introduction & Features

SoundMates PRO are your solution for true wireless freedom and high-quality audio. Stereo sound and active noise-cancelling technology let you hear music and phone calls the way they were meant to be heard, while the compact charging carry case makes them perfect for keeping up with everyday life.

Features:

- Noise-Cancelling
- Waterproof IPX4
- Up to 6hrs play/talk
- 3 x Recharge in case
- Bluetooth 5.0
- Auto-Pairing

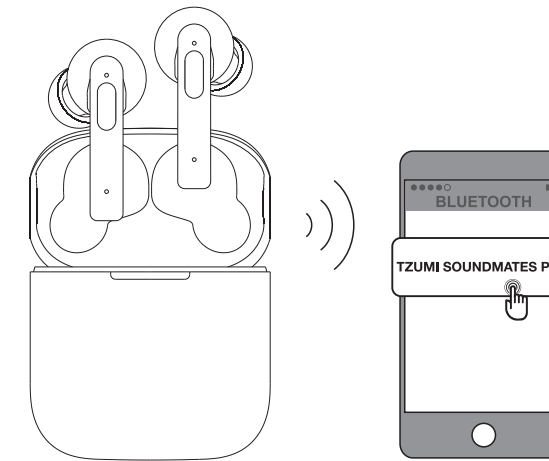
Product Overview & Contents



- Soundmates PRO earbuds
- Charging carry case
- USB-C cable
- Small, medium & large earbud tips

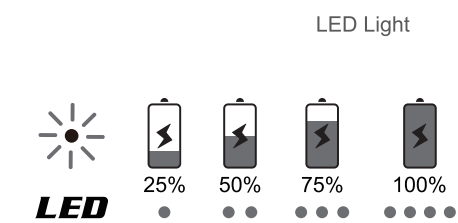
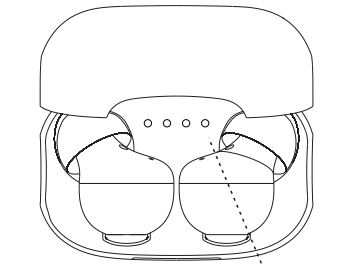
Pairing With Your Devices

1. Remove earbuds from the case.
2. Open the Bluetooth pairing list on your device and click on “Tzumi Soundmates Pro”.
3. Your device should now be paired and ready for use.



Charging

- Place earbuds in case and they will automatically begin charging if the case has remaining power.
- The indicator light on the charging case will be green while charging.
- The earbuds LED will light red while the earbuds are charging and will turn off once fully charged.
- After full charge, all four lights on the case will remain on.
- Recharge carry case via the included USB-C cable.



Power On/Off

- SoundMates PRO “power on” automatically when removed from the case and “power off” when put in case.

Voice Assistant

- Press L earbud for 2 seconds to activate.

Music

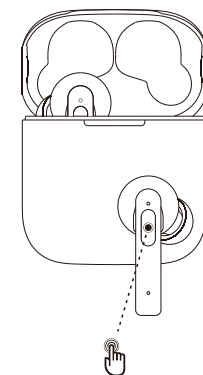
- Play/Pause: Double-tap R or L earbud
- Last Song: Three taps to L earbud
- Next Song: Three taps to R earbud

ANC Mode

- Press R earbud for 2 seconds to activate Noise Cancelling mode, press 2 seconds again to deactivate

Reset Earbud Pairing

1. Remove the right earbud from the case and press on the earbud for approximately 10 seconds until red LED light blinks 5 times.
2. Put earbuds back into case and remove again. When you hear “power on”, the earbuds are now ready to pair.
3. After the Earbuds are paired, the right earbud will blink in green and red.
4. Open the bluetooth pairing list on your phone and click on “Tzumi Soundmates Pro” to connect your phone.



Specifications

Bluetooth Version	V5.0
Battery (Earbuds)	Lithium Battery (60mAh each)
Battery (Charging Case)	Lithium Battery (500mAh each)
Charging Port	Type C
Input Voltage	4.5-5.5V (Supports max. 12V voltage protection)
Earbuds Charging Time	1.5h (approximately)
Case Charging Time	2h (approximately)
Playing Time (ANC is off)	6h (approximately)
Playing Time (ANC is on)	5h (approximately)
Case Recharged Earbuds	3 Times
Standby time (earbuds in the charging case)	180 days
Frequency	20-20k Hz

Safeguards

- Do not use this unit for anything other than it's intended use.
- Keep the unit away from heat source, direct sunlight, humidity, water or any other liquid.
- Do not expose the device to extremely high or low temperatures, as it may damage the battery.
- Do not operate the unit if it has been wet or moist to prevent against electric shock and/or injury to yourself and damage to the unit
- Do not use the unit if it has been dropped or damaged in any way.
- Repairs to electrical equipment should only be performed by a qualified electrician. Improper repairs may place the user at serious risk.
- Keep the unit out of reach of children.
- This unit is not a toy.